



FORWARD STUDIOS

....the italian choice



LOCATION

The dedication to technical and aesthetic excellence is a fundamental part of Forward Studio's attraction. The Studio is located on the hilly outskirts of Rome at 330 metres above sea level, which dominate the eternal city and command exceptional views. The studios are only a few kilometres from the centre of Rome, just 20 minutes to the Colosseum and are strategically situated near a hub of major roads which enable our clients to reach the city centre and nearby areas very easily. Only 10 minutes from

Ciampino airport and 25 minutes from the intercontinental airport of Rome Fiumicino, the Studios are easily reached by road from the centre of Rome following Via Anagnina. Forward Studios are in a complex which includes accommodation, a gym and wellness centre, moreover they are surrounded by some of the best hotels, restaurants and entertainment facilities of the Capital. The spacious and airy rooms designed and decorated to the highest standard together with the "Relax Area", all accessible to

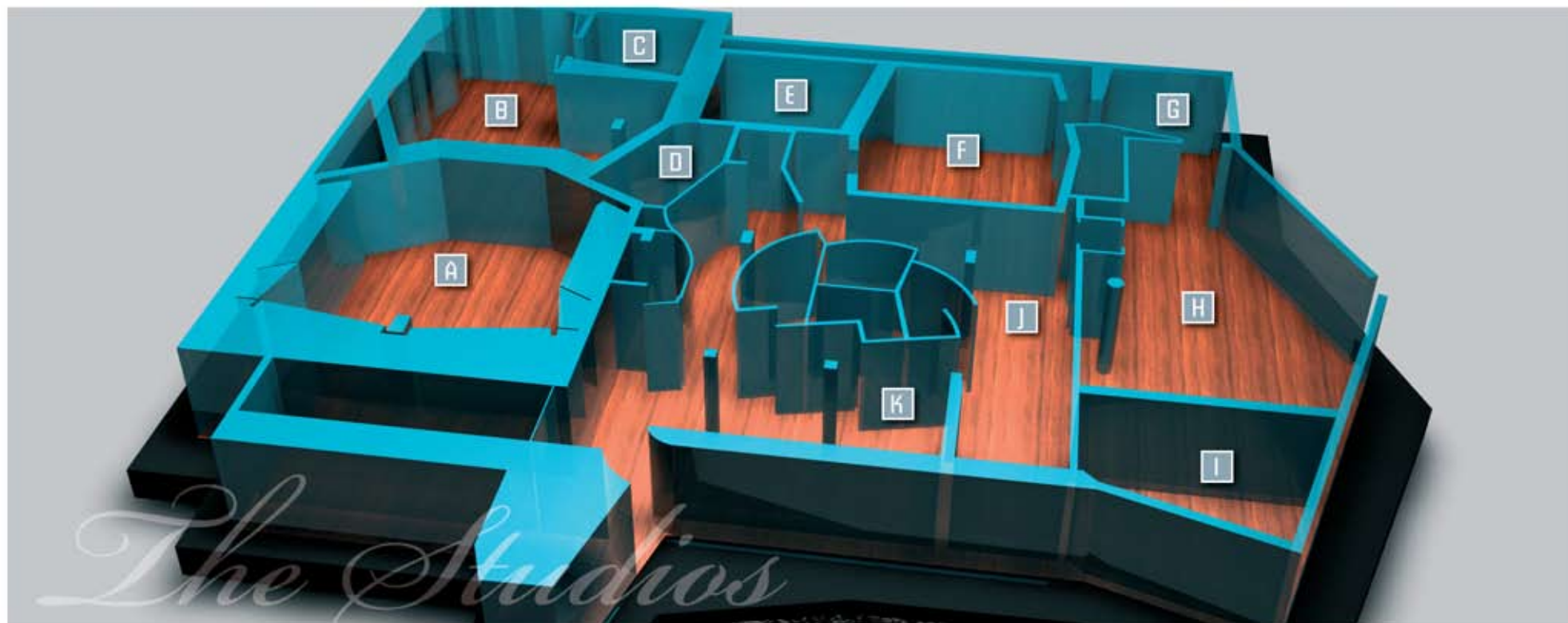
the garden, guarantee an extremely high level of comfort. All the studios can have independent entrances so that more than one production can take place privately and simultaneously. The elevator accesses the first floor, where in the ample and characteristic open space, there are the administration offices and the Augustus Studio. The ample car park and countryside surrounding the Studios are two other attractive features offered by the facility.



La scelta logistica, per i Forward Studios, è certamente una componente fondamentale di stile. Immersi nel verde delle colline romane, situati a 330 mt sul livello del mare, dominano la Capitale da un privilegiato punto di osservazione. Distanti dal centro di Roma solo pochi Km, "20 minuti per raggiungere il Colosseo", i Forward Studios sono collegati al meglio tramite risorse viarie importanti che permettono il collegamento con facilità sia alla città che ai dintorni. A "10 minuti" dall'aeroporto di Ciampino ed

a "25 minuti" dall'internazionale di Fiumicino, gli Studios si raggiungono in pochi minuti da Roma percorrendo la Via Anagnina. I Forward Studios sono inseriti in un comprensorio che prevede alloggi, palestre e centro benessere, oltre ad essere circondati dalle migliori strutture alberghiere, della ristorazione e dell'intrattenimento. All'interno degli Studios, spazi di collegamento molto luminosi unitamente ad arredi di classe, completano, insieme alle "Relax area", tutte comunicanti con il giardino, la loro ricca dotazione di

comfort. Tutti gli studi possono avere ingressi indipendenti al fine di poter gestire più produzioni contemporaneamente senza che le stesse vengano a contatto. Tramite ascensore si accede al piano superiore dove, in un ampio e caratteristico "open space", si collocano gli uffici direzionali e lo Studio Augustus. L'ampio parcheggio ed il verde lussureggiante che avvolge gli Studios impreziosiscono ulteriormente l'offerta della nostra "Sound Factory".

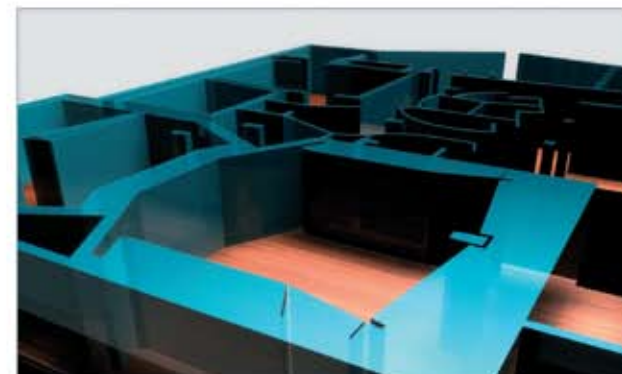


THE STUDIOS

This project originates from the desire of the founder to create a “Sound Factory” in his own country which could equal the most prestigious studios world wide and after years of technical research, collaboration and visits within the sector, this dream is now a reality.

Driven by the ambition of creating something which is dominated by the perfect equilibrium between environment and maximum technological choice, Forward Studios are unquestionably built to the highest possible standards

dedicated to recording and mixing where it is simple to work on your project in maximum comfort and a relaxing atmosphere. The desire to create an exclusive oasis in extraordinarily beautiful surroundings yet perfectly integrated in the metropolitan area led to the natural choice of the site the studios are built on: the conversion and reconstruction of an antique three storey villa built in the Roman style, rich in exclusive and sometimes quirky details.



A CAESAR STUDIO



E RECORDING ROOM 04



B RECORDING ROOM 01



F AURELIUS STUDIO



C RECORDING ROOM 02



G
H
I RECORDING ROOM 05 - 06 - 07



D RECORDING ROOM 03



J
K LOUNGE ROOMS



THE ROOMS

Questo progetto nasce dalla volontà del fondatore di dotare il proprio Paese di una "Sound Factory" alla pari delle più prestigiose al mondo e, dopo anni di approfondimenti tecnici, collaborazioni e frequentazioni nel settore, questo sogno è ora realtà. Pensati e concepiti con l'ambizione di voler creare un'opera dominata dal perfetto equilibrio tra qualità dell'ambiente e massima scelta tecnologica, i Forward Studios sono di fatto quanto di meglio si possa richiedere ad una struttura dedicata al recording ed al

mixing, dove è semplice lavorare alle proprie creazioni nel massimo comfort e relax. La volontà di creare un'oasi esclusiva in un ambiente dalla bellezza straordinaria, perfettamente integrata nell'area metropolitana, ha portato con naturalezza alla scelta del sito su cui si è lavorato: la riconversione e la ristrutturazione di una villa d'epoca in stile Romano, disposta su tre livelli e ricca di particolari e peculiarità esclusivi.



CAESAR STUDIO

- | | | | | |
|---|---|--|--|--|
| <p>Console
AMS NEVE 88R (72 Channel fitted on 84)</p> <p>Main Monitors
GENELEC 1036A (Pair)</p> <p>Nearfield Monitors
GENELEC 1031A (Pair)
YAMAHA NS10 STUDIO (Pair)
AURATONE 5C (Pair)</p> <p>Power Amps
CROWN DC300A
HAFLER 9505
HAFLER P3000 (2)</p> | <p>Cue
4 STEREO LINES
*AVIOM PERSONAL HEADPHONES LAN
MIXER (7)</p> <p>Surround System
GENELEC 1031A (5)
GENELEC 7073A (1)
AUDIENT AP520 (Bass Management)</p> <p>Effects
LEXICON 480
*TC ELECTRONICS SYSTEM 6000
MXR FLANGER
AKG BX 20E REVERB</p> | <p>EVENTIDE DSP4000
TC ELECTRONICS 2290
*AMS 15-80 S
ROLAND SDE 3000A
LEXICON PCM70 (2)
SONY DPS-V77
YAMAHA SPX 90 II
YAMAHA SPX 1000
AMS RMX16</p> <p>Equalizer & Processor
COURT ACOUSTIC (GRAPH. EQ.)
MANLEY MASSIVE PASSIVE
TUBE-TECH CL 1B</p> | <p>TUBE-TECH PE 1C
MILLENNIA MEDIA STT1
AUDIO LINE AL-112
DBX 120 A
SPL DE ESSER
SPL TRANSIENT DESIGNER
*GML 8900
AMS NEVE 33609J
SSL XLOGIC G SERIES
SUMMIT DCL 200
UREI 1178
UREI LA4 (2)
EMPIRICAL LABS DISTRESSOR EL8 (2)
DBX 160A (2)</p> | <p>*API 550 B (4)
*FOCUSRITE ISA 130 (2)</p> |
|---|---|--|--|--|



Preamp

AMS NEVE 1081
 *API 512 C (2)
 *FOCUSRITE ISA 110 (2)

Recording & Player

SONY PCM R500
 SONY CDR W66
 ALESIS MASTERLINK
 *STUDER A827 GOLD EDITION 24TRK 2 INCH
 *STUDER A80 2 TRK ½ INCH

Test & Measuring

AUDIOSCOPE 3000 ANALYZER

Pro Tools

MAC G5 2 GHZ DUAL PROCESSOR
 APPLE CINEMA DISPLAY 23 INCH
 PRO TOOLS HD3 WITH VARIOUS PLUGINS

Converters

PRISM SOUND ADA8, DIGIDESIGN 192 (5)

Syncro & Wordclock

DIGIDESIGN SYNC I/O
 LUCID TECHNOLOGY SSG192 MASTER SYNC
 GENERATOR
 EMAGIC UNITOR 8

Main Screen Monitor

PANASONIC TH 50 INCH PLASMA MONITOR

Microphones

AKG C12 VR (2), C414 TL2 (2), C451 B (4), D12
 (2), D112 (1), C414 B-ULS (2), C460 (2), C5900 B (1)

AUDIOTECHNICA 4050 (2)

DPA 4006 (2), *4011 (2)

BEYER DYNAMIC M88TG (2), *380DG (2)

BLUE *BOTTLE (1), MOUSE (1)

MILAB LSR 2000

EARTHWORKS QTC1 (2)

ELECTROVOICE EV RE20 (1)

NEUMANN *U47 FET (2), KM100 (2), KM184 (2),
 M149 (1), SM69 (1), U87 AI (4)
 NEUMANN GEFELL CMV 563-M7 (1)*

SCHOEPS CMC6U (2)

SENNHEISER BLACKFIRE (1), MD421 (6), 521 (4)

SHURE SM57 (7), SM58 (4), SM58 BETA (1)

SANKEN CU-44X (1)



AURELIUS STUDIO

Console

SSL 9000J (56 Channel fitted on 64)

Main Monitors

GENELEC 1034A

Nearfield Monitors

GENELEC 1031A (Pair)
YAMAHA NS10 STUDIO (Pair)
AURATONE 5C (Pair)

Power Amps

CROWN DC300A
AMCRON DC300A SERIES II
YAMAHA 350 XS SERIES

Cue

2 STEREO LINES
*AVIOM PERSONAL HEADPHONES LAN
MIXER (7)

Surround System

GENELEC 1031A (5)
GENELEC 7071A (1), MARTINSOUND
MULTIMAX EX (Bass Management &
Controller)

Effects

LEXICON 480
*TC ELECTRONICS SYSTEM 6000
ROLAND SDE 3000A

EVENTIDE D/SX H3000
TC ELECTRONICS 2290
LEXICON PCM41
LEXICON PCM70
SONY DPS-V77
YAMAHA SPX 90 II
YAMAHA REV5
ENSONIQ DP4

Equalizer & Processor

GML 8200
MILLENNIA MEDIA STT-1
DRAWMER DS201
DBX 120 A
SPL DE ESSER

AMS NEVE 33609J
*API 550 B (4)
*FOCUSRITE ISA 130 (2)
UREI 1176 LN BLACKFACE (2)
* UREI 545
EMPIRICAL LABS DISTRESSOR EL8X (2)
UREI LA4 (2)
EMPIRICAL LABS FATSO EL7
DBX 160 A (2)
DBX 160 X
DBX 165 A
VALLEY AUDIO 730LT
TRANSIENT DESIGN
BSS DPR 901
KORG TONEWORKS



| Preamp

AUDIO LINE AL-111
 *AMS NEVE 1081
 *API 512 C (2)
 *FOCUSRITE ISA 110 (2)

| Recording & Player

SONY CDR W66
 PANASONIC SV-3900
 ALESIS MASTERLINK
 *STUDER A827 GOLD EDITION 24TRK 2 INCH
 *STUDER A80 2TRK 1/2INCH

| Test & Measuring

KLARK TEKNIK DN 60

| ProTools

MAC G5 2 GHZ DUAL PROCESSOR
 APPLE CINEMA DISPLAY 23 INCH
 PRO TOOLS HD3 WITH VARIOUS PLUGINS

| Converters

APOGEE AD-16X
 APOGEE DA-16X (4)
 APOGEE PSX 100

| Syncro & Wordclock

DIGIDESIGN SYNC I/O
 APOGEE BIG BEN Master Sync Generator
 EMAGIC UNITOR 8

| Main Screen Monitor

LCD PROJECTOR SONY WPL- W400Q



AUGUSTUS STUDIO

Console

MCI JH-600 SERIES
TASCAM DM-24

Main Monitors

GENELEC 1031A

Nearfield Monitors

YAMAHA NS-10M STUDIO

Power Amps

CROWN DC300A Series II
CHEVIN RESEARCH A500
AURATONE 5C

Cue

1 STEREO LINE

Surround System

*GENELEC 1031A (5)
*GENELEC 7071A (1)
*AUDIENT AP520 (Bass Management)

Effects

LEXICON PCM81
LEXICON PCM70 (2)
LEXICON PCM60
EVENTIDE H3000 SE
YAMAHA SPX 90 (2)

Equalizer & Processor

MILLENNIA MEDIA STT1
YAMAHA DEQ5
UREI LA4 (2)

Preamp

FOCUSRITE MIC-PRE

Recording & Player

ALESIS MASTERLINK ML-9600

Main Screen Monitor

ACER AT 3201 W 32 INCH LCD MONITOR

ProTools

MAC G4 2 GHZ
BENQ 19 INCH LCD DISPLAY
PRO TOOLS HD3 WITH VARIOUS PLUGINS

Converters

DIGIDESIGN 192 (3)

Test & Measuring

*AUDIOSCOPE 2813 ANALYZER



OTHER EQUIPMENT

Headphones

AKG K271, AKG K141, AKG 141 Studio, SONY 7506, SONY 7509, SONY MDR 7502, *GRADO SR-325, *GRADO RS-2

Instruments & Midi

*Yamaha C7 Grand Piano, *HAMMOND C3 (Year 1966), *LESLIE 122, *MINI MOOG (Year 1977), *CRUMAR DS2 VINTAGE SYNTH, *FENDER RHODES MKII (Year 1978), *DW DRUM EXOTIC, *PEARL DRUM EX SERIES, *KORG A3, *KORG Poly 61, *HOHNER CLAVINET D6 (Year 1971), *YAMAHA P90, *ROLAND RS5, *ROLAND A90, *GEM SK76, *KORG 01R/VW (2), *LINE 6 POD 2.0, *VOCE V3 (Hammond Dedicated Sounds), *ROLAND JV 2080, *KURZWEIL K2000R, *EMU E4X GOLD, *KORG TR-RACK, *KORG WAVESTATION SR (2), *ALESIS D4, *YAMAHA TG500, *KORG A1, *YAMAHA MU100R, *MIDI TIMEPIECE II (2), *DIGITAL TIMEPIECE, *EMAGIC AMT8

Ampli

*MARSHALL JCM2000 (Triple Super Lead), *VOX AC30(2), *CRATE VINTAGE CLUB 30, *FENDER SUPER TWIN, *AMPEG PORTAFLEX

Other Nearfield

*QUESTED VS 2108 (Pair), *ADAM S3A (Pair), *WESTLAKE AUDIO LC 6.75 (Pair), *WESTLAKE AUDIO BBSM-4 (Pair), *JBL 4411 (Pair), *Yamaha NS10M Studio (Pair), *Yamaha NS10M (Pair), *Auratone 5RC (Pair), *Auratone 5C (Pair)

Other Outboard

*DANGEROUS SM, *WAVES MAXXBCL, *LANG PEQ2, *MEYER SOUND CP-10, *GML 8900, *PUBLISON DHM 89 B 2, *EVENTIDE H3000 SE, *DRAWMER DS 201, *AMS 15-80 SB, *API 550 A (2), *UREI LA4, *UREI 545, *UREI 1176 LN (4), *ITI Equalizer, *TUBE-TECH MP1A, *TUBE-TECH ME 1B, *TUBE-TECH PE 1C, *PENDULUM AUDIO PL-2, *HARRISON Channel Strip, *PULTEC EQP1A, *KLARK TEKNIK DN 780, *GML Transformeless Microphone Preamp, *LAKE MESA QUAD Eq, *T.C. ELECTRONIC M2000, *GML 9500, *PHOENIX Master Compressor, *MUSITRONICS MU-TRON BI-PHASE, *ROLAND SPACE ECHO RE-201, *AUDIOSCOPE 2813, *AUDIOLINE AL-111, *AUDIOLINE AL-112, *SYMETRIX 544 (4 channels), *YAMAHA SPX90, *MINDPRINT Dual Tube Channel, *BSS DE-ESSER 402, *ASHLY GQX SERIES 3102, *YAMAHA DEQ5, *APHEX CX-1 (4), *B&B AUDIO EQF-2 (2), *ORBAN/PARASOUND 621-B, *VALLEY PEOPLE 415, *ALESIS Quadraverb



RECORDING AREAS

The total internal studio area is 1500 m². The foundations which are more than 2 metres deep are made up of a layer of travertine stone, volcanic rock and cement. The reinforced concrete floating islands are found above this layer, these are then supported by a complex sound proofing system made up of a thick spiders web of calculated release rubber supports; the so called "floating islands" support the "shells" of the control rooms, the Live area and the ISO booths. The masonry of the studios is made up of very heavy

and thick blocks of volcanic rock (approx. 10,000) which rest on the "floating islands". The rooms, built purposefully in this way, though adjacent and communicating, are not in structural contact thus guaranteeing maximum sound proofing. All the circuits are made up of deeply positioned elastically joined conduits so to avoid all types of unwanted transmission. The air conditioning system with the highest level of mechanic and aerodynamic noise reduction, guarantees the control of all the temperature,

speed and humidity parameters individually for each area. It is with this principle that we created separate systems thus avoiding any acoustic returns. The cabling is the same for all the spaces allowing the operators to interact with each studio, independently from the control room where they are working.



L'area totale interna su cui sorgono gli Studios è pari a circa 1.500 Mq. Essi si poggiano su di una stratificazione mista fra pietrame di travertino, pezzami di tufo e cemento, che si estende in profondità per oltre due metri.

Sopra questa stratificazione sorgono le isole galleggianti di cemento armato, che a loro volta sono sostenute da un complesso sistema di ammortizzamento realizzato tramite una fitta ragnatela di supporti in gomma a rilascio calcolato. Le "isole galleggianti" sostengono gli "involucri"

delle Control Rooms, delle Live Area e degli Iso booth. Le murature delle sale sono realizzate in blocchi di tufo (circa 10.000) di forte peso e spessore, che poggiano a loro volta sulle "isole galleggianti". Le stanze, così costruite, pur restando adiacenti e comunicanti, non sono in contatto strutturale garantendone il massimo isolamento. Tutti i collegamenti impiantistici sono stati realizzati tramite condotti accoppiati elasticamente e posti in profondità, al fine di evitare ogni tipo di trasmissione indesiderata.

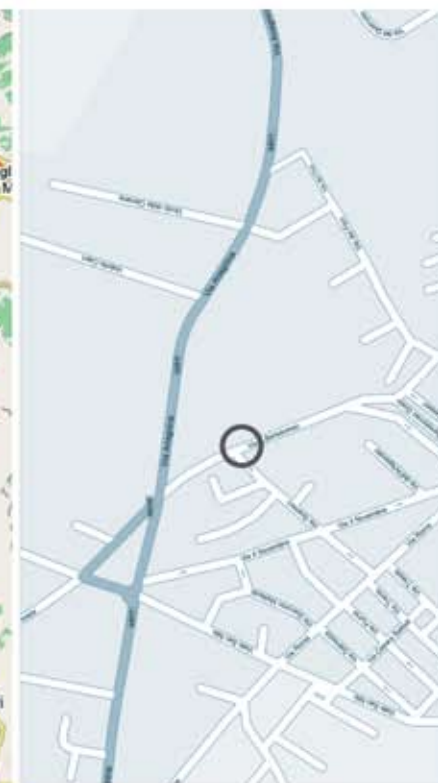
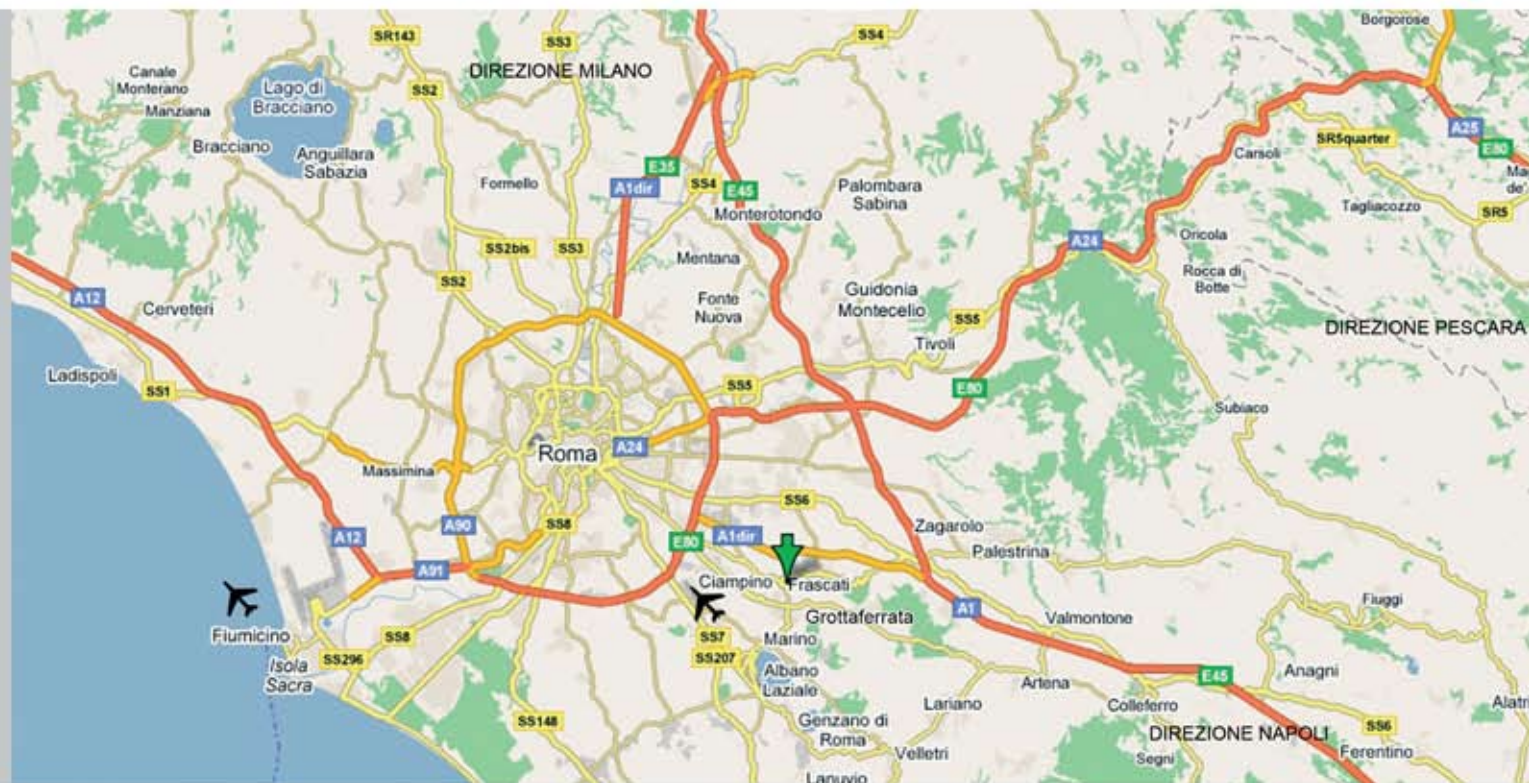
L'impianto di aerazione ad altissima attenuazione acustica del rumore, sia aerodinamico che meccanico, garantisce il controllo di tutti i parametri "temperatura, velocità ed umidità" separatamente per tutte le aree, evitando così ogni possibile rientro acustico.

Tutti gli ambienti sono cablati con la totalità degli altri spazi al fine di permettere agli operatori la comunicazione fra studi, indipendentemente dalla Control Room utilizzata.



LOCATION





UTILITIES

The Studios

Viale San Bartolomeo, 32
00046 Grottaferrata
ROMA Italia

GPS Coordinates

41°47'31.58" N
12°40'12.42" E

Phone & Fax

Phone 06.9454.6481
Fax 06.9454.9869

Web & Mail

www.forwardstudios.it
info@forwardstudios.it



Disclaimer Statements The information in this document is subject to change without notice and does not represent a commitment on the part of the vendor. Forward Studios reserves the right to make changes to the content of this document and/or the products associated with it at any time without obligation to notify any person or organization of such changes, ee&o.

Note Other outboard equipment and instruments are available upon request and are chargeable

* = Charged extra,

FORWARD STUDIOS

Viale San Bartolomeo, 32
00046 Grottaferrata
ROMA Italia

Tel. +39 06.9454.6481
Fax +39 06.9454.9869

www.forwardstudios.it
info@forwardstudios.it